

OXGEN™ Prestained Protein Marker

LADD-PR1-500

Introduction

The OXGEN™ Prestained Protein Marker has a broad range of 5–245 kDa. It's a mixture of purified proteins covalently coupled to a blue dye, except for two reference bands (one green and one red band at 25 kDa and 75 kDa respectively), that resolves to 13 bands of even intensity when electrophoresed. The protein concentrations are carefully balanced for even intensity. The covalent coupling of the dye to the proteins affects their electrophoretic behavior in SDS-PAGE gels relative to unstained proteins. The apparent molecular weight of the prestained proteins are given in the image.

Features

- ✓ Sharp and stable
- ✓ Two reference bands; red at ~75 kDa and green at ~25 kDa
- ✓ Ready to use

Applications

- ✓ Monitoring of protein migration during SDS-polyacrylamide gel electrophoresis
- ✓ Monitoring of protein transfer onto membranes during Western blotting
- ✓ Sizing of proteins on SDS-polyacrylamide gels and Western blots

Quality Control

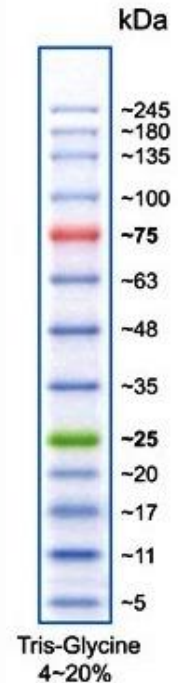
Tested in SDS-PAGE and Western blotting.

Storage

At -20°C or at room temperature.

Usage

For blotting use 2.5 µl/well for mini-gels and 5 µl/well for standard gels. For visualizing during electrophoresis: use 5 µl/well for mini-gels and 10 µl/well for standard gels.



Product use limitation

This product is developed, designed and sold exclusively for research purposes and use only. The product is not intended for diagnostics or drug development, nor is it suitable for administration to humans or animals.