

PT100 • PTM100 (pH/Cl) / PT500 (pH/Alk/Cl)

User Manual

Manual d'utilisation

Manual de usuario

Gebrauchsanleitung

Manuale dell'utente



PT400

pH (Phenol Red)
Cu (Copper/Zink LR)
(EDTA)
(Dechlor)



PT300

pH (Phenol Red)
H₂O₂ (Hyd.Perox. HR)
PHMB (PHMB)
(Acidif. PT)



PT200

pH (Phenol Red)
O₂ - (MPS)
Aktive Oxygen
(DPD4)



PTM200

pH (Phenol Red)
O₂ - (MPS)
Aktive Oxygen
(DPD4)



PT1500

pH (Phenol Red)
QUAT (QAC HR)



PT100

pH (Phenol Red)
Chlorine / Bromine
(DPD1)



PT500

pH (Phenol Red)
Cl / Br (DPD1)
Alk (Alkatest)



PTM100

pH (Phenol Red)
Chlorine / Bromine
(DPD1)

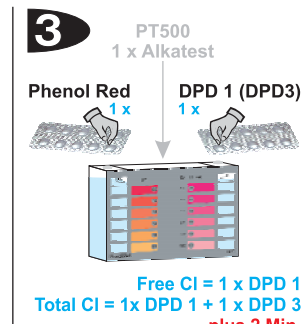
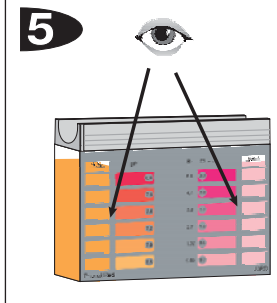
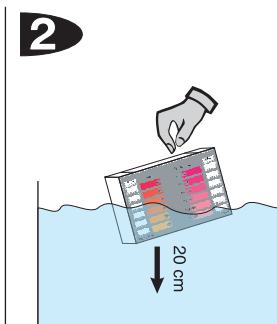
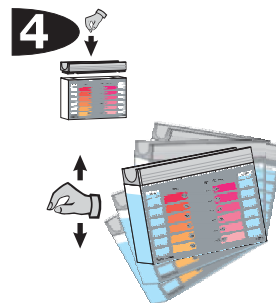
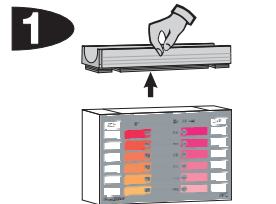
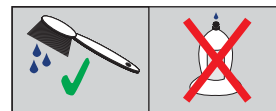
(GB) CAUTION!
Reagents for water-analysis only!
Do not eat! Keep away from children!
Store cool and dry!
Clean tester properly before testing!

(F) Attention!
Les pastilles sont exclusivement destinées aux analyses chimiques. NE PAS AVALER. Tenir hors de portée des enfants. Conserver dans un endroit frais et sec. Bien rincer le testeur avant chaque utilisation!

(E) Atención!
Pastillas para el análisis des agua, solamente para análisis químicos!
No para tomar!
No debe llegar a las manos de niños!
Consérvese en lugar fresco y seco!
Limpiar el aparato antes de usar!

(D) Achtung!
Wasseranalysetabletten nur für chemische Analysen! Nicht einnehmen!
Darf nicht in die Hände von Kindern gelangen!
Kühl und trocken lagern!
Testgerät vor Gebrauch gründlich reinigen!

(I) Attenzione!
Reagenti unicamente per analisi acqua!
Non ingerire!
Tenere fuori dalla portata dei bambini!
Mantenere in luogo asciutto e fresco
Dopo l'utilizzo pulire ed asciugare accuratamente il tester



Free Cl = 1 x DPD 1
Total Cl = 1x DPD 1 + 1 x DPD 3
plus 2 Min.
Combined Cl = Total Cl - Free Cl



Pool-i.d.

Video:
www.testblock.info/video/PT100.mp3